

ProCapture-X

POE Fingerprint Access Control Terminal



ProCapture-X is a POE fingerprint access control terminal with the most advanced SilkID technology, which not only possesses outstandingly high identification rate towards dry, wet and rough finger, but also provides the utmost security with its live finger detecting capability.

The device is designed in horizon style design and is equipped with touch keypad, which provides a superior touching experience. It also offers flexibility standalone installation or with any third-party access control panel that supports standard wiegand signal. TCP/IP, RS485 and Wi-Fi (Optional) are available that the device can be used in different networks.

Features



Modern Design & Interactive UI



Revolutionary SilkID Fingerprint Sensor



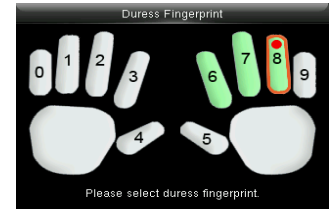
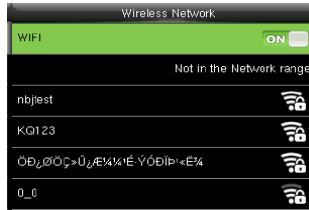
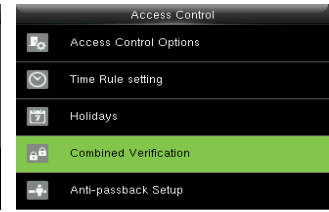
Multiple Verification Modes:
Fingerprint / Card / Password



Outstanding Performance With Dry, Wet and Rough Fingers



Wireless Network
* Wi-Fi Connection



Specifications (G: GL Exclusive Feature)

Capacity

Fingerprint	20,000
Cards	50,000
Transaction	500,000

Compatibility

- Wiegand Slave Reader
- (G) RS485 FP Slave Reader
- ZKBioSecurity Software

Hardware

- (G) 1.2GHz High Speed CPU
- (G) Memory 128MB RAM / 256MB Flash
- SilkID Fingerprint Sensor
- 2.4 Inches TFT-LCD Screen
- 125KHz EM Reader / IC Card(Optional)
- Hi-Fi Voice & Indicator
- Tamper Switch Alarm
- (G) Touch Keypad
- (G) POE(Standard IEEE 802.3at)
- Wireless doorbell(Optional)

Access Control Interface:

- Lock Relay Output
- Alarm Output/Auxiliary Input
- Exit Button / Door Sensor
- Security Relay Box

Special Functions:

- (G) Multiple Verification Modes
- (G) Alive Finger Detection
- ZK Encrypted Card(Optional)
- (G) Fingerprint Card(Optional)

Standard Functions:

- Access Levels / Groups / Holidays
- DST / Bell Schedule
- Duress Mode
- Anti-Passback
- Record Query
- Custom Wallpaper & Screen Saver

Communication

- (G) TCP/IP
- (G) RS485 (For fingerprint&card Reader)
- USB Host
- Wiegand Input / Output
- (G) Wi-Fi(Optional)

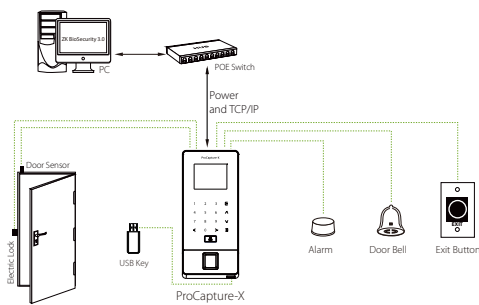
Additional Info

Working Temperature: 0°C ~ 45 °C
 Dimensions: 200.5 × 88.5 × 28.7 mm.
 Fingerprint Algorithm ZKFinger v10.0
 Fingerprint: FAR≤0.0001% FRR≤0.01%
 Package Includes 12V 3A Power Supply

Power

Operating Voltage 12V DC 3A
 Current Draw < 500mA

Configuration



Dimensions (mm)

