

USER MANUAL

Touch Monitor

Version: 1.0

Date: June, 2017

Contents

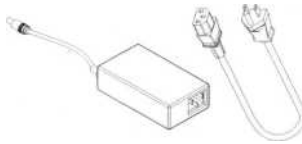
1 Accessories.....	1
2 Control Panel And Ports Description.....	2
1. Touch Monitor Control Panel and Ports Description	2
2.Ports Description	3
3 Installation	5
1.Touch Monitor Hardware Installation	5
2.Touch Computer Hardware Installation.....	6
4 Touch Screen Driver Setup and Calibration.....	7
I . Setup under OS(operating system):	7
II .Touch Screen Calibration Method.....	9
5 Trouble Shooting	15
6 Warranty	16

1 Accessories

Upon receiving the goods, Please open the package to inspect whether all items are complete and intact. If there is anything damaged or lost, please contact with your supplier to state it immediately.

The standard items are as following:

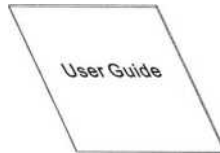
1. Power Adapter & AC Cord
2. CD Driver
3. User Guide



① Power Adapter & AC Cord



② CD Driver



③ User Guide

2 Control Panel And Ports Description

1. Touch Monitor Control Panel and Ports Description

(1) OSD Control Panel



There are five buttons on OSD control panel MENU, DOWN, POWER, UP and AUTO. The functions of them are following:

Menu Button

Press it to open OSD window, enter user mode to do the function adjustment or selection of the item. It may have many levels in one item. As you select this kind of item, you will enter the next levels and see the sub-items

Down Button

Press it to Scroll item "DOWN" or to decrease the value or to switch the selected item to another.

Power Button

Control LCD ON /OFF button

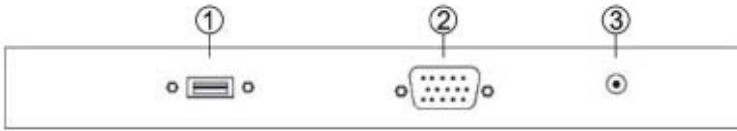
Up Button

Press it to Scroll item "UP" or to increase the value or to switch the selected item to another.

Auto Button

Auto adjust the screen size.

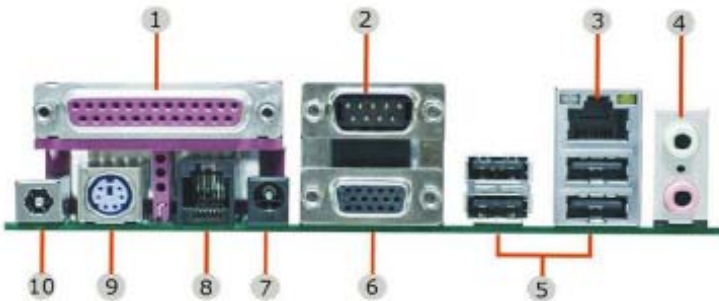
(2)Port



①—USB PORT ②—VGA PORT ③—POWER CONNECTOR

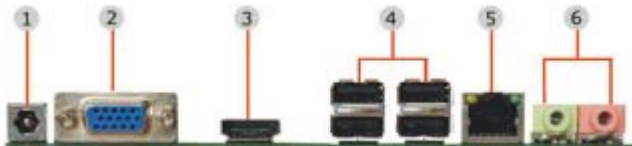
2.Ports Description

ST-25012P



- ①—LPT Port
- ②—VGA Port
- ③—COM Port
- ④—DC OUT Port
- ⑤—LAN Port
- ⑥—DJ11 Port
- ⑦—Audio Port
- ⑧—PS/2 Port
- ⑨—USB Port
- ⑩—DC Power Supply

ST-25014P



- ①—DC Input
- ②—VGA Port
- ③—HDMI Port
- ④—USB Port
- ⑤—LAN Port
- ⑥—Audio Port

ST-1073P



①—DC Input

②—VGA Port

③—HDMI Port

④—COM Port

⑤—LAN Port

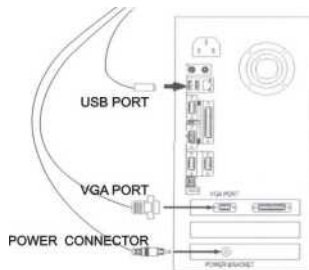
⑥—Audio Port

3 Installation

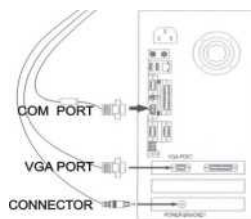
1.Touch Monitor Hardware Installation

- (1) Turn off the computer.
- (2) Plug one of the power adapter plug to the touch screen monitor connector and connect the AC plug of the power adapter to an AC outlet.
- (3) Connect the VGA cable to the VGA port on the computer
- (4) If the port of touch screen in the YL touch screen monitor is USB port, please connect to the USB port on the computer. If it's RS232/COM port, please connect to a convertor first, then to the RS232/COM port on the computer. Please note which port number it is connected to, this information is required for touch screen driver setup.

A. Connection method for USB port of touch screen

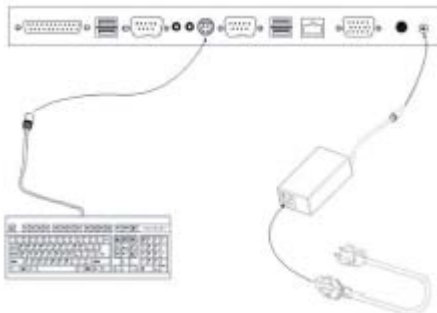


B. Connection method for COM port of touch screen



2.Touch Computer Hardware Installation

- (1) Connect the AC Cord to power adapter, then plug to the power interface/connector of touch computer.
- (2) Connect the keyboard to the PS2 port of touch computer.
(see as picture) .



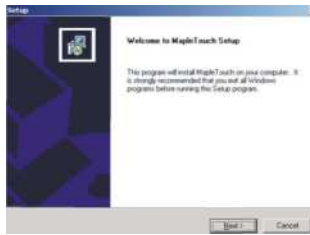
4 Touch Screen Driver Setup and Calibration

I. Setup under OS(operating system):

1. Touch screen driver can be compatible with DOS, Linux, WinCE, Windows95, Windows98, Windows ME, Windows NT, Windows2000, Windows XP, and the prior Windows OS.
2. Setup steps of touch screen driver under Windows family OS.

Note: Different OS has different images, however, the instructions are almost the same. Hence, Here takes the Windows OS as the sample.

- (1) In the CD-ROM, double click the driver for the correlative OS. E.g.Win98, Win XP, then appear as followings:



- (2) Click "Next"

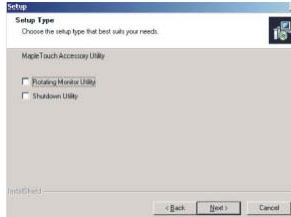
Please check the check box for K/2 touch conhollei.



- (3) Don't select, click the "Next" directly to continue.



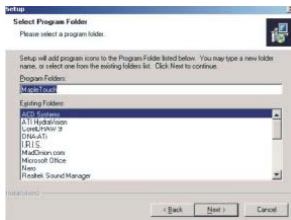
(4)Click the “Confirm” to continue.



(5)Don't select, just click the “Next” to continue.



(6)Click the “Browse...” to save the program in the path you want to put (It's suggested to use the default path.), then click the “Next” to continue.



(7)Click the “Next” to continue.



(8) Setup finished will show the following window:



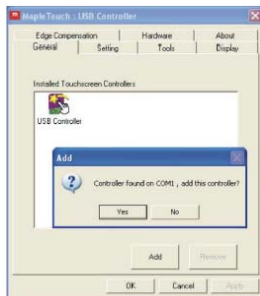
II .Touch Screen Calibration Method

1. 4 Points Calibration

(1) After driver installed, there is an icon file named "MAPLETOUCH", double click to enter.



(2) The interface is COM port, please click the button "add" to add the related device.



(3) Switch to the button "Tools", choose "4 Points Calibration" (Do 4 points alignment to match display), please see picture as below:



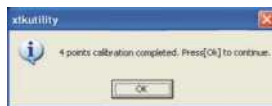
(4) To calibrate: Touch each "X" until it stops blinking. Please see picture as below:



(5) After completing the 4 points calibration, then will see picture as below:

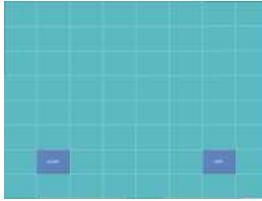


(6) Press [OK] to continue. Please see picture as below:



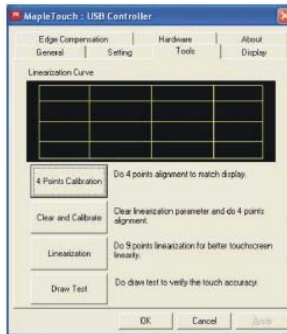
(7) DrawTest

Press on the "Draw Test" button, then will go into a blue square window. User can verify the touch accuracy by drawing at random. After that, user can press "Clear" button to clear the window OR press the "Quit" button or press mouse right button to quit from the draw test window.



2. 9/25 Points Calibration

(1) Switch to the button “Tools”, and choose the “Linearization” (It is suggested to use 9/25 points calibration when the 4 points calibration is inaccurate. In general, we suggest the 4 points calibration as the first priority.)



Click “Linearization”. If it is 9 points calibration, the picture as below:



Click "Linearization". If it is 25 points calibration, the picture as below:



(2)When completing the calibration, click "confirm" to exit.

3. Setting

(1) Beep

Select “Beep On Touch” to get sound when touching; Deselect “Beep On Touch” to cancel sound when touching.

Select “Beep On Release” to get sound when releasing; Deselect “Beep On Release” to cancel sound when releasing.



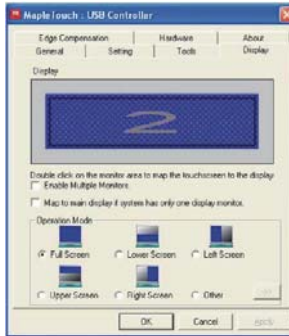
(2) Linearization Style

Select “9 Points” or “25Points”



4. Display

Select "Enable Multiple Monitors" if needed.



5. Edge Compensation (Default).



5 Trouble Shooting

When encountering difficulties in using the items, please follow the steps below. If the problem persists, please contact with your supplier.

1. No picture on touch screen monitor
 - a. Check the AC cord and VGA signal cable. Make sure they are properly connected
 - b. Check if the power button on the OSD panel is turned on.
 - c. Check if the computer has entered energy saving mode.
2. Abnormal display colour.
 - a. Check if the signal cable is properly connected to the computer.
 - b. Use the OSA(on-screen-adjustment) mode to adjust the color parameters.
3. Skewed or distorted display
 - a. Check if the VGA signal cable is properly connected to the computer.
 - b. Use the OSA mode in the OSD control panel to adjust the geometric parameters.
4. Picture too large or too small
 - a. Check if display resolution is set correctly in the operating system.
 - b. Use the OSA mode to adjust the size parameters.
5. Touch screen does not work
 - a. Check if the cable is properly connected to the computer.
 - b. Check if the Maple Touch driver has been loaded properly.
6. Touch screen cannot stand on the touch-point.
 - a. Redo the 4 points calibration or other ways calibration.

6 Warranty

Thanks for your support of the our products. This is an overview of Limited Warranty to our touch monitors & touch computers.

The information in this document is subject to change without prior notice in order to improve reliability, design and function and does not represent a commitment on the part of the manufacturer. In no event will the manufacturer be liable for direct, indirect, special, incidental, or consequential damages arising out of the use or inability to use the product or documentation, even if advised of the possibility of such damages.

Warranty and Maintenance:

1. Provide one-year free guarantee and three-year maintenance.
2. In the normal use circumstances and non man-made damage, it has one-year quality warranty from the delivery date.
3. The fault under the normal use circumstances means resulting the natural damage without intentionally or unheeding behavior in the normal use state, not improper operation such as dismantle, repair and other non-natural destroy.
4. If your products have some problems, you can contact with the technology department or avail our website for technical services.
5. With the above reasons, the customer should take charge of one-way freights.

The following will not be free maintenance:

1. Without valid invoice, or warranty label affixed has already damaged
2. Repair and change any parts without manufacturer authorized
3. The damage resulting from the inappropriate use, keep, and maintenance
4. The fault, scratch and damage caused by the move or fall
5. Cable, pin, connectors, and other fragile goods lost or damaged, it will be ready to be provided with paid replacement
6. With the above reasons, the customer should take charge of all freight.

Replacement Policy:

To qualify for replace (as applicable), you must contact us to obtain a return-authorization form. You must return the new Machine, including all documentation and accessories, intact and in its original packaging. A copy of the invoice, the return-authorization form must accompany the return. The customer should take charge of all the freights.

ZK Building, Wuhe Road, Gangtou, Bantian, Buji Town,
Longgang District, Shenzhen China 518129
Tel: +86 755-89602345
Fax: +86 755-89602394
www.zkteco.com

