

# ZKBioSecurity V5000\_3.1.0\_R

## Change Log

Date: September 2020

Doc Version: 1.0

English

Thank you for choosing our product. Please read the instructions carefully before operation. Follow these instructions to ensure that the product is functioning properly. The images shown in this manual are for illustrative purposes only.



For further details, please visit our Company's website  
[www.zkteco.com](http://www.zkteco.com).

Copyright © 2020 ZKTECO CO., LTD. All rights reserved.

Without the prior written consent of ZKTeco, no portion of this manual can be copied or forwarded in any way or form. All parts of this manual belong to ZKTeco and its subsidiaries (hereinafter the "Company" or "ZKTeco").

## Trademark

**ZKTeco** is a registered trademark of ZKTeco. Other trademarks involved in this manual are owned by their respective owners.

## Disclaimer

This manual contains information on the operation and maintenance of the ZKTeco equipment. The copyright in all the documents, drawings, etc. in relation to the ZKTeco supplied equipment vests in and is the property of ZKTeco. The contents hereof should not be used or shared by the receiver with any third party without express written permission of ZKTeco.

The contents of this manual must be read as a whole before starting the operation and maintenance of the supplied equipment. If any of the content(s) of the manual seems unclear or incomplete, please contact ZKTeco before starting the operation and maintenance of the said equipment.

It is an essential pre-requisite for the satisfactory operation and maintenance that the operating and maintenance personnel are fully familiar with the design and that the said personnel have received thorough training in operating and maintaining the machine/unit/equipment. It is further essential for the safe operation of the machine/unit/equipment that personnel has read, understood and followed the safety instructions contained in the manual.

In case of any conflict between terms and conditions of this manual and the contract specifications, drawings, instruction sheets or any other contract-related documents, the contract conditions/documents shall prevail. The contract specific conditions/documents shall apply in priority.

ZKTeco offers no warranty, guarantee or representation regarding the completeness of any information contained in this manual or any of the amendments made thereto. ZKTeco does not extend the warranty of any kind, including, without limitation, any warranty of design, merchantability or fitness for a particular purpose.

ZKTeco does not assume responsibility for any errors or omissions in the information or documents which are referenced by or linked to this manual. The entire risk as to the results and performance obtained from using the information is assumed by the user.

ZKTeco in no event shall be liable to the user or any third party for any incidental, consequential, indirect, special, or exemplary damages, including, without limitation, loss of business, loss of profits, business interruption, loss of business information or any pecuniary loss, arising out of, in connection with, or relating to the use of the information contained in or referenced by this manual, even if ZKTeco has, of the possibility of such damages.

This manual and the information contained therein may include technical, other inaccuracies or typographical errors. ZKTeco periodically changes the information herein which will be incorporated into new additions/amendments to the manual. ZKTeco reserves the right to add, delete, amend or modify the information contained in the manual from time to time in the form of circulars, letters, notes, etc. for better operation and safety of the machine/unit/equipment. The said additions or amendments are meant for improvement /better operations of the machine/unit/equipment and such amendments shall not give any right to claim any compensation or damages under any circumstances.

ZKTeco shall in no way be responsible (i) in case the machine/unit/equipment malfunctions due to any non-compliance of the instructions contained in this manual (ii) in case of operation of the machine/unit/equipment beyond the rate limits (iii) in case of operation of the machine and equipment in conditions different from the prescribed conditions of the manual.

The product will be updated from time to time without prior notice. The latest operation procedures and relevant documents are available on <http://www.zkteco.com>.

If there is any issue related to the product, please contact us.

## ZKTeco Headquarters

**Address**            ZKTeco Industrial Park, No. 26, 188 Industrial Road,  
Tangxia Town, Dongguan, China.

**Phone**            +86 769 - 82109991

**Fax**                +86 755 - 89602394

For business related queries, please write to us at: [sales@zkteco.com](mailto:sales@zkteco.com).

To know more about our global branches, visit [www.zkteco.com](http://www.zkteco.com).

## About the Company

ZKTeco is one of the world's largest manufacturer of RFID and Biometric (Fingerprint, Facial, Finger-vein) readers. Product offerings include Access Control readers and panels, Near & Far-range Facial Recognition Cameras, Elevator/floor access controllers, Turnstiles, License Plate Recognition (LPR) gate controllers and Consumer products including battery-operated fingerprint and face-reader Door Locks. Our security solutions are multi-lingual and localized in over 18 different languages. At the ZKTeco state-of-the-art 700,000 square foot ISO9001-certified manufacturing facility, we control manufacturing, product design, component assembly, and logistics/shipping, all under one roof.

The founders of ZKTeco have been determined for independent research and development of biometric verification procedures and the productization of biometric verification SDK, which was initially widely applied in PC security and identity authentication fields. With the continuous enhancement of the development and plenty of market applications, the team has gradually constructed an identity authentication ecosystem and smart security ecosystem, which are based on biometric verification techniques. With years of experience in the industrialization of biometric verifications, ZKTeco was officially established in 2007 and now has been one of the globally leading enterprises in the biometric verification industry owning various patents and being selected as the National High-tech Enterprise for 6 consecutive years. Its products are protected by intellectual property rights.

## About the Manual

This manual introduces the **ZKBioSecurity V5000\_3.1.0\_R Change Log**.

All figures displayed are for illustration purposes only. Figures in this manual may not be exactly consistent with the actual products.






## Document Conventions

Conventions used in this manual are listed below:

### GUI Conventions

For Software	
Convention	Description
<b>Bold font</b>	Used to identify software interface names e.g. <b>OK, Confirm, Cancel</b>
>	Multi-level menus are separated by these brackets. For example, File > Create > Folder.
For Device	
Convention	Description
< >	Button or key names for devices. For example, press <OK>
[ ]	Window names, menu items, data table, and field names are inside square brackets. For example, pop up the [New User] window
/	Multi-level menus are separated by forwarding slashes. For example, [File/Create/Folder].

### Symbols

Convention	Description
	This implies about the notice or pays attention to, in the manual
	The general information which helps in performing the operations faster
	The information which is significant
	Care taken to avoid danger or mistakes
	The statement or event that warns of something or that serves as a cautionary example.

## Table of Contents

<b>1</b>	<b>KEY UPDATES.....</b>	<b>6</b>
<b>2</b>	<b>FUNCTIONAL UPDATE DETAILS.....</b>	<b>7</b>
2.1	SOFTWARE LANGUAGE.....	7
2.2	API.....	7
2.3	REGISTER PALM THROUGH PV10R.....	8
2.4	LOCKDOWN ACCESS.....	9
2.5	ATTENDANCE REPORTS .....	10
2.5.1	STANDARD WORK TIME REPORT.....	10
2.5.2	WORK ABNORMAL REPORT .....	10
2.6	SENDING AUTOMATIC TEMPERATURE REPORTS .....	11
2.7	AUTOMATIC DATA CLEANING .....	12

## 1 Key Updates

Implemented Change	Description
<b>Software Language</b>	The software now supports Japanese language as well.
<b>Palm Registration</b>	Supports PV10R device which is the near-infrared palm data capture scanner.
<b>Temperature Reports</b>	Newly added automatic sending Temperature reports feature, which allows the user to configure the exported Temperature Raw Record, Individual Temperature Record, Abnormal Temperature Record to the selected email account on time.
<b>Attendance Reports</b>	Added two simplified attendance reports: Abnormal Report, Work Time Report
<b>API</b>	Supports more Application Programming Interface.
<b>Lockdown Access</b>	The latest InBio Pro firmware supports Superuser access during lockdown
<b>Automatic Data Cleaning</b>	Enhanced data cleaning feature that cleans data within the specified period.

## 2 Functional Update Details

### 2.1 Software Language

The new software supports Japanese language as well. It allows users to switch among 13 languages. Enter the login credentials and select the required language from the drop-down.



### 2.2 API

The new software provides more Application Programming Interface to the user.

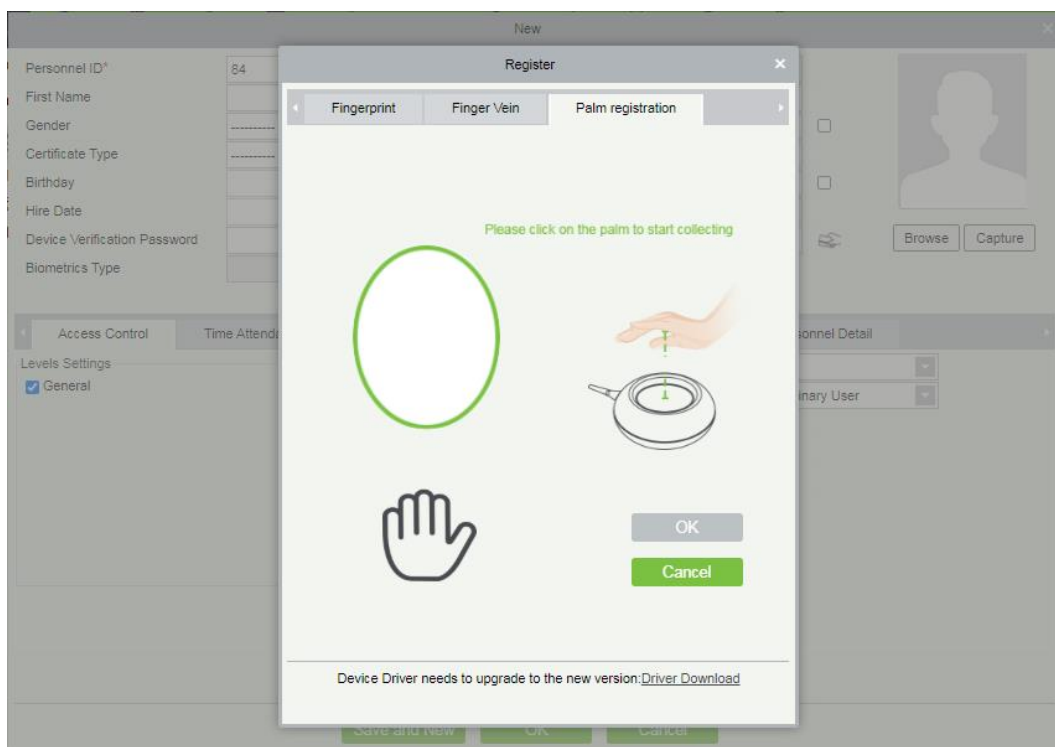
API Name	Description
[Get Person]	Allows user to get personnel visible face image
[GET /api/hep/transaction/monito]	Newly add Mask & Temperature Real-Time monitoring
[Get FirstInAndLastOut List By Pin]	Allows user to get personnel first in and last out records
[api/person/add]	Allows user to disable the personnel by API



## 2.3 Register Palm through PV10R

Our software allows PV10R to scan and capture the palm and vein templates.

- PV10R is a touchless scanner for capturing palm and vein templates.
- ZKBioSecurity allows user using PV10R scan and register employee's Palm data easily.
- On the **Personnel** module, click **New >Access Control> Palm/Vein Registration** to register and then click **OK** to save and update.



## 2.4 Lockdown Access

Optimized Inbio Pro Controller features such as allow superuser access when the door lockdown is enabled.

- This newly added feature allows the Superuser to open the door when it is locked. If there is an emergency, the Superuser can open the door only if **Allow Superuser Access When Lockdown** is selected.
- On the Access module, click **Access > Device > Door>New/ Edit** to go to the door interface. After that, enter the device related details as required and then select **Allow Superuser Access When Lockdown** to enable Superuser to access the door during lockdown.

The screenshot shows the 'Edit' configuration window for a door in the ZKTeco software. The window is titled 'The current' and contains the following fields and settings:

Field	Value	Unit/Range
Device Name*	192.168.214.183	
Door Name*	192.168.214.183-1	
Verification Mode*	Card or Password	
Wiegand Format	Auto	
Card number reversal	<input type="checkbox"/>	
Operate Interval*	2	second(0-254)
Door Sensor Type*	None	
Reverse Lock State on Door Close	<input type="checkbox"/>	
Door Sensor Delay		second(1-254)
Passage Mode Time Zone		
Passage Delay	5	second(0-60)
Multi-Person Operation Interval*	10	second(5-60)
Door Number*	1	
Active Time Zone*	24-Hour Accessible	
Lock Open Duration*	5	second(0-254)
REX Mode*	Unlock	
REX Delay		second(5-254)
REX Time Zone	24-Hour Accessible	
Anti-Passback Duration of Entrance	0	minute(0-120)
Duress Password		(Maximum 6 Bit Integer)
Emergency Password		(8 Bit Integer)
Disable Alarm Sounds	<input type="checkbox"/>	
Open Door Delay	0	second(0-60)
Allow Superuser Access When Lockdown	<input type="checkbox"/>	

At the bottom of the window, there are 'OK' and 'Cancel' buttons. A red box highlights the 'Allow Superuser Access When Lockdown' checkbox.

**Note:** Only the latest InBio Pro firmware supports this feature.

## 2.5 Attendance Reports

Our software also delivers the Work Time Report and Work Abnormal Report details.

### 2.5.1 Standard Work Time Report

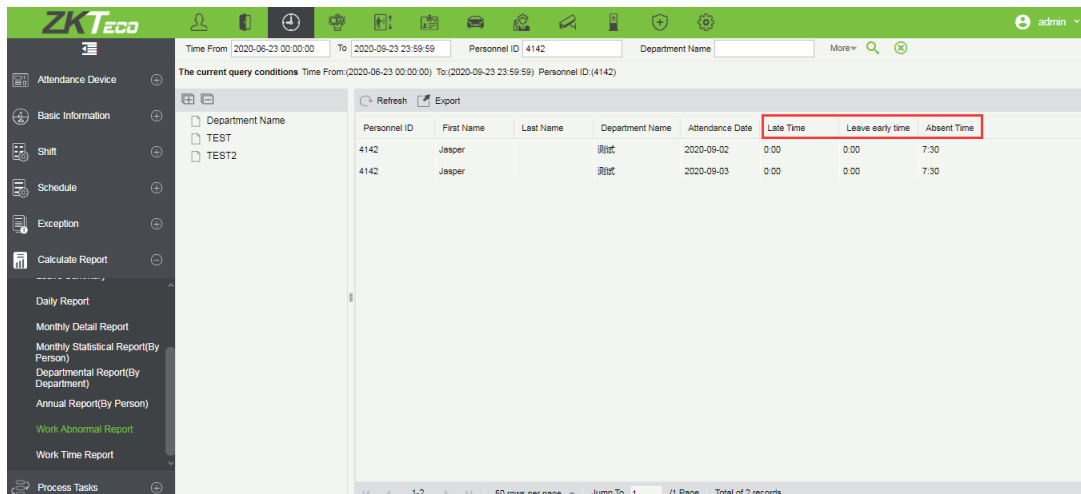
- On the **Attendance** module, click **Report** to view the Work Time Report.
- The user can now also search for specific report by using the search options for the required Time period, Personnel ID, and Department Name.
- The Work Time Report displays the daily work time and the total work time of the specified time period.

The current query conditions Time From:(2020-09-01 00:00:00) To:(2020-09-04 23:59:00) Personnel ID:(4143)

Personnel ID	First Name	Last Name	Department Number	Department Name	2020-09-01	2020-09-02	2020-09-03	2020-09-04	Total working time
4143			25	TEST	7:30	7:30	0:00	0:00	15:00

### 2.5.2 Work Abnormal Report

- On the **Attendance** module, click **Report** to view the **Work Abnormal Report**.
- Here the user can view the Late Time, Leave Early Time, and Absent Time as well.

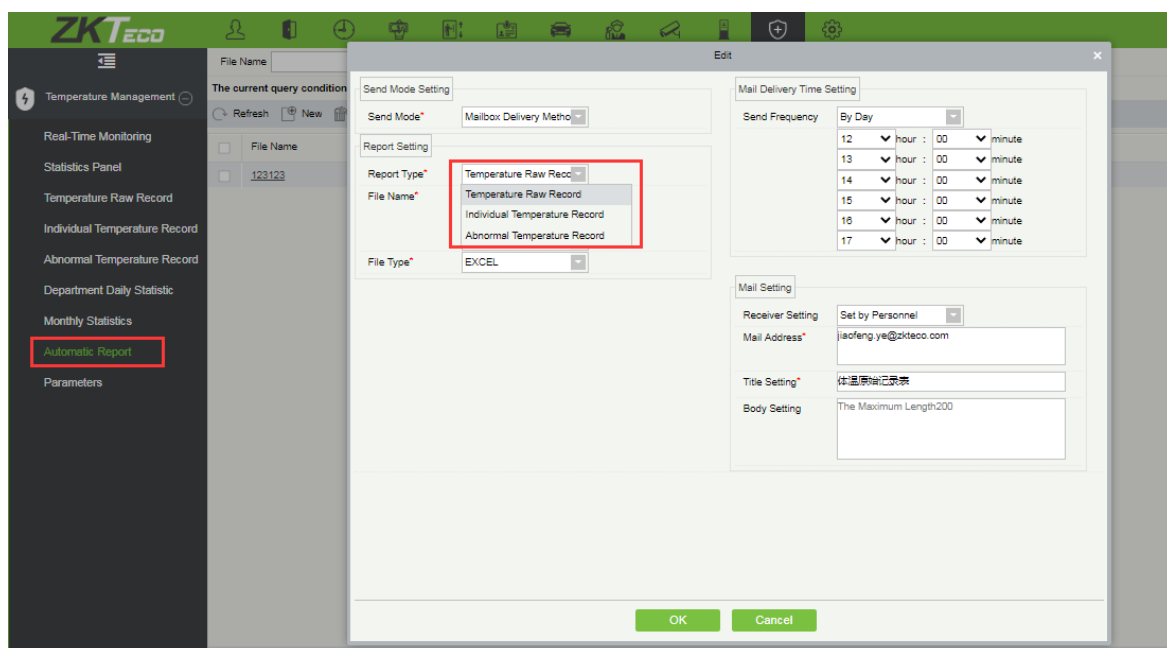


Personnel ID	First Name	Last Name	Department Name	Attendance Date	Late Time	Leave early time	Absent Time
4142	Jasper		测试	2020-09-02	0.00	0.00	7.30
4142	Jasper		测试	2020-09-03	0.00	0.00	7.30

## 2.6 Sending Automatic Temperature Reports

This newly added function allows the user to configure sending the exported Temperature Raw Record, Individual Temperature Record, Abnormal Temperature Record to the selected email accounts, on time.

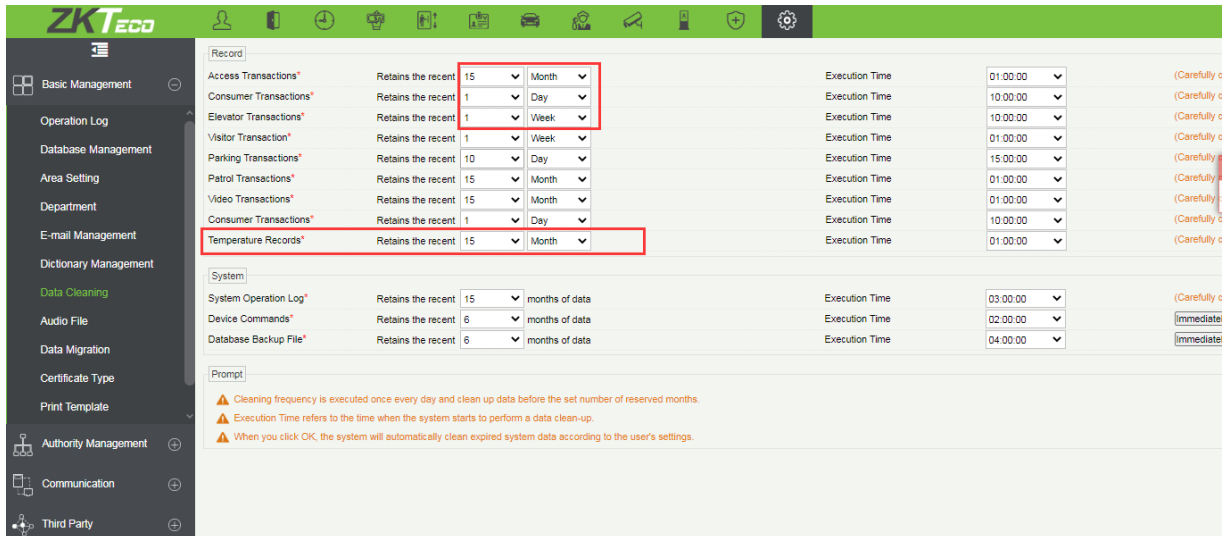
- On the **Temperature Management** module, click **Temperature Management > Automatic Report**, and then select the Report Type (Temperature Raw Record or Individual Temperature Record or Abnormal Temperature Record) from the drop-down list.
- After selecting the required report details, configure the **Mail Delivery Time Setting** and the **Mail Setting** displayed on the right of the **Edit** window, and then click **OK** to save and update the changes.



## 2.7 Automatic Data Cleaning

The **Data Cleaning** Function facilitates to configure the data cleaning frequency from a minimum of 1 day/ week/ month and the newly added **Temperature Records** feature automatically cleans the Temperature records with specified time option.

On the **System** module, click **Basic Management** > **Data Cleaning** to configure the corresponding settings.



ZKTeco Industrial Park, No. 26, 188 Industrial Road,  
Tangxia Town, Dongguan, China.

Phone : +86 769 - 82109991

Fax : +86 755 - 89602394

[www.zkteco.com](http://www.zkteco.com)

